

FIRST NATION'S People

The Peace Country derived its name from “Unchaga”, Beaver for peace. Their home for 11,000 yrs., in 1899 and 1900, First Nations signed Treaty No. 8 in Fort Vermilion. Today they make up approx. 30% of the population. Their celebrations, traditions and crafts reflect the stories and customs of the past.

ALEXANDER MACKENZIE & the Fur Traders

In 1789 attempting to reach the Pacific, Mackenzie instead reached the Arctic Ocean – in doing so –paddled past Boyer’s Post. His 2nd attempt in 1792 was successful and he became the first person to cross North America, 12 years before the Lewis and Clark expedition. The Hudson Bay Co. established a permanent post in Fort Vermilion by 1830. With a sawmill, flourmill, brick factory, post office, grocery store and rich produce, it was a self sufficient, bustling community by the early 1900’s. In 1908 the Hudson Bay Co. Factor’s House was built. Today it remains the only HBC factor’s house on its original site in Alberta. It is designated an Alberta Provincial Historic Resource.

Agriculture

550,000 acres are cropped annually plus 20,000 used for pasture. Approx. 600 farms are in operation growing primarily wheat, canola, peas, flax, forage, hay, barley and oats. Over 100 farmers in the Mackenzie Region are organically certified farmers or are in the process of



becoming certified. Most of the land has gray-wooded soil. Long daylight hours make up for a short growing season. Livestock is also a large part of the local industry. Support service includes four agricultural retailers, two agricultural equipment dealers, a seed cleaning plant and grain loading facilities. Agriculture is an expanding industry.

Landscape photo courtesy Ross Eagles; Train photo courtesy Tolko



Photo courtesy La Crete Sawmills

Forestry

The first sawmill opened near High Level in 1964. Roughly 1/4 of the District is forested with mature timber. The industry is busiest in winter. Once the ground is frozen the annual log haul gets underway and runs 24/7 until spring breakup. High Level and La Crete each have two mills. 50% of residents are involved with the industry in some way. Those in agriculture often run equipment through the winter log haul, giving year round income.

Tolko Industries Ltd., is one of Alberta’s largest sawmills employing 350+ people year round. The company is the most modern, technically advanced and productive dimension lumber mills in Alberta today. Tolko is a strong wood products company with a solid reputation, committed to professional and sustainable forest management.

La Crete Sawmills Ltd., established in 1989, has a team of approximately 130 dedicated employees that strive to produce a quality product to their market throughout North America and overseas. The company specializes in the lumber production of spruce as well as the production of quality wood pellets. The mill’s annual capacity is 70 million board feet, and the wood pellet mill is capable of producing up to 120,000 tonnes of pellets annually. For more info call 780-928-2292.

Norbord, a state-of-the-art oriented strand board mill, boasts the world’s longest single line continuous press, consuming 1.3 million cubic meters of timber per year. Visit www.norbord.com for more info.

Oil AND Gas

Oil was first discovered near Rainbow Lake in 1965 and near Zama City in 1966. The Hay-Zama Lakes area contain the only offshore Alberta oil production facility. Many major oil companies are in operation here, with plans for future development ongoing.

VISITOR INFORMATION & MUSEUMS

Mackenzie Crossroads Museum & Visitors Centre
Ph: 780-926-4811
www.highlevel.ca/visitors/museum

La Crete Mennonite Heritage Village
Ph: 780-928-4447
www.lacretemuseum.weebly.com

Fort Vermilion Heritage Centre Lean-to Museum and Archives & Visitor Log House
Ph: 780-927-4603
www.fortvermilionheritage.ca

Zama Recreation Society
Ph: 780-683-2481

La Crete Tourist Information Centre
Ph: 780-928-2278
lacretechamber.com/about-la-crete/tourism/

COMMUNITY CONTACTS

Fort Vermilion Board of Trade
Ph: 780-927-4008
www.fortvermilion.org

Mackenzie County
Ph: 780-927-3718
www.mackenziecounty.com

Town of High Level
Ph: 780-926-2201
www.highlevel.ca

High Level & District Chamber of Commerce
Ph: 780-926-2470
www.highlevelchamber.com

Town of Rainbow Lake
www.rainbowlake.ca

La Crete & Area Chamber of Commerce
Ph: 780-928-2278
www.lacretechamber.com

Zama Recreation Society
Ph: 780-683-2481

THINKING OF RELOCATING OR INVESTING

Century 21 Prime Realty (2002) Inc.
Ph: 780-926-4883
www.c21prime.com

M&M Real Estate
Ph: 780-926-5537
www.highlevelrealestate.com

Fort Vermilion School Division
Ph: 780-927-3766
www.fvsd.ab.ca

The Echo-Pioneer
Ph: 780-926-2000
www.mrnews.ca/the-echo-pioneer

Community Futures North West Alberta
Ph: 780-926-4233
www.cfnwa.ab.ca

Regional Economic Development Initiative
Ph: 780-926-4233
www.rediregion.ca

Northern Lakes College
Fort Vermilion: 780-927-2450
High Level: 780-926-5625
La Crete: 780-928-2008
www.northernlakescollege.ca

Town of Rainbow Lake
www.rainbowlake.ca

Thank you sponsors & all those who made this publication possible:

Regional Economic Development Initiative, and Mackenzie Frontier Tourism Association, Community Futures Northwest Alberta, Project Coordinator - Wilma O'Rourke and all who provided facts, input and photographs. A special thank you to Jacob Marfo for donating the photograph for the cover page. This brochure was adapted from its original copy (2006) Western Economic Diversification Canada version.

This brochure is for informational purposes. We apologize for any omissions or discrepancies. If you require further info on a specific topic contact the appropriate party.



TOUR ALBERTA'S

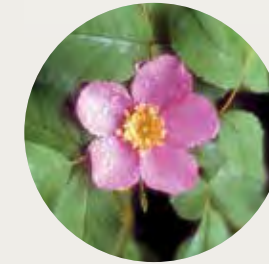
North

Mackenzie Frontier cordially invites you to explore & relax in beautiful Northern Alberta



THE MACKENZIE FRONTIER Circle Drive

Drive on scenic, uncrowded roads through thriving communities carved out of Alberta's last wilderness. Hike on wilderness trails, camp out under the stars and explore the uniqueness of each community.



Spend a lazy afternoon fishing or watching local bird populations. Visit museums, visitor centres and historical sites to learn how the region has developed and grown. Plenty of subject matter and longer than usual summer daylight hours inspire many a photograph!

Located in Alberta's NW corner, Mackenzie Region is larger than the province of New Brunswick. High Level, the most central community in the district, is located halfway between Edmonton and Yellowknife. It is the last full service stop before the NWT border. Where Alberta began, Fort Vermilion is located along the Peace River. La Crete, to the south, is the agricultural center for the region. Zama City – which isn't a city at all – is in the middle of northern Alberta's oil field. South of Zama is Rainbow Lake, where Banff Oil Co. drilled the first successful oil well and set off the region's oil and gas boom.

LAY OF THE LAND

You seldom find such variation. The open flat land of Buffalo Head Prairie changes to wetlands and river valleys near the Peace River. To the north and west are extensive Boreal Forests. The Caribou Mountain Wildland Provincial Park is safe haven for native species to thrive undisturbed. Special regulations apply for hunting and ATV use.

Rose photo courtesy Government of Alberta; Bison photo courtesy The Echo



Photo courtesy Aaron Dittrich

Greater amounts of lichens and mosses grow here than anywhere else in Alberta. The Cameron Hills in the NW and the Buffalo Head Hills to the SE contrast the low muskeg and open meadows. Dry salt meadows can also be found. Watt Mountain, NW of High Level, has vegetation similar to the Rocky Mountain Foothills. We have the largest known meteorite crater (20–25 km in diameter) in Western Canada. Many rivers and lakes supply our water, most notably the mighty Peace River – for years the highway of The North. The Nationally significant Hungry Bend Sandhills border the Peace.

FEATHERED AND FURRED INHABITANTS

Vast wetlands attract many species of migrating birds. Endangered species and those sensitive to man (Whooping Cranes, Peregrine Falcons and rare White Pelican) also find safe haven here. Bistcho Lake to the NW, is home to one of the largest breeding populations of bald eagles in Alberta. Moose inhabit the muskeg and lowlands while deer frequent fields and meadows. Alberta hosts the largest concentration of Woodland Caribou. The region is proud to accommodate two herds, one centralized in the Wood Buffalo National Park, and the Hay-Zama herd in and around Chateh and Zama City. Fur-bearing animals such as wolves, coyotes and beavers are in abundance with a good chance you'll see a black bear in your travels. Woolly mastodon and 10,000-year-old bison bones have also been uncovered in the region.





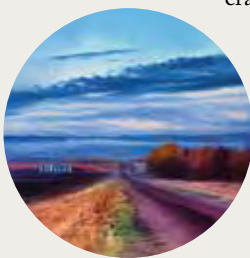
Photo courtesy Ross Eagles

THE Tour

Your adventure begins 10 km North of Paddle Prairie. Turn off the Mackenzie Highway onto Highway 697 East to Tompkins Landing and the La Crete Ferry crossing.

With one of the last remaining ferries still in service in Alberta, the **La Crete Ferry Crossing** is unique. Weather permitting, the ferry runs April - November (no charge). A winter ice bridge keeps traffic moving. Further east is **Tompkins Landing Picnic area**, with tables and fire pits it's perfect for lunch along the Peace.

Stop at Buffalo Head Prairie Co-op and buy local hand sewn crafts, herbs and fabrics. Many of the earliest farms are located at **Buffalo Head Prairie**. Continue north to **La Crete**, settled in 1914 by the Rivard brothers who were avoiding conscription. The mid-30's saw many Mennonite settlers relocate from the Prairies, searching for land and cultural freedom.



Landscape photo courtesy Ross Eagles; Heritage scene photo courtesy Fort Vermilion Heritage Centre

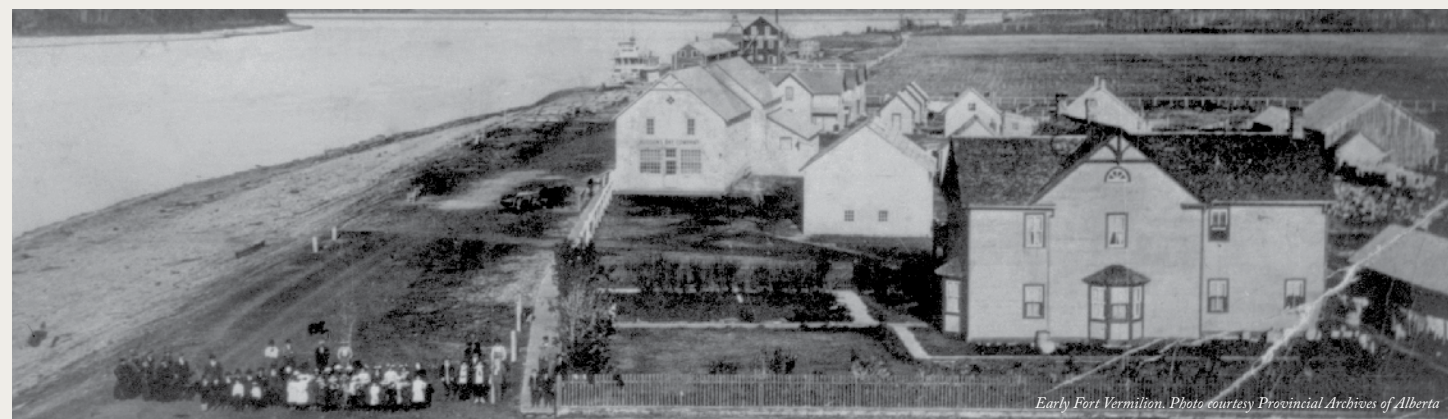
Homesteads were established and land cleared, much being done by hand. The first store opened in 1950, a post office soon followed. In 1958-59 a gravel road was built to Fort Vermilion. By the 1960's roads had opened up the area. Agriculturally the area exploded with 20,000 acres being cleared per year during the 1970's – early 80's.

OFF THE BEATEN PATH

9 km off Hwy 88 another agriculturally important area, Rocky Lane, was settled following WWI by veterans who received land grants. 1929-31 saw many settlers move from Saskatchewan. A small farming community, it consisted of a one-room schoolhouse, general store and many hardworking people. The 1950's saw another influx of people and a new school. Today the school (Kindergarten - Grade 12) and local riding arena and winter's cross country skiing are the hub of activity.

At the **La Crete Mennonite Heritage Village** learn about their traditions. La Crete is a busy community with much to offer: public schools, medical clinic, library and recreation facilities. **The Northern Lights Recreation Center** boasts an indoor and outdoor ice rink, bowling, baseball diamonds, basketball, tennis, playground and beach volleyball court and hosts many events. Young visitors enjoy the **skateboard park**. La Crete offers high speed Internet; cell phone, cable and satellite service. Primarily agricultural, local industry is equipped with today's modern technologies. Finding employment is not difficult; industry is continually expanding, as are services. Explore this community and all it has to offer. Don't miss the local traditional Mennonite cuisine at the **Homestyle Bakery & Lunch Counter**.

Fort Vermilion, is a 20-minute drive NE. Take Hwy 697 E from La Crete, turn right onto Hwy 88 then drive 4 km to Fort Vermilion's access road. This part of the Peace has been continually inhabited since 1788 when Charles Boyer, (NW Company) established a trading post. More goods followed and by 1830 the



Early Fort Vermilion. Photo courtesy Provincial Archives of Alberta

Fort was permanently established at its present site. Built in 1908, the **Hudson's Bay House** symbolizes the importance of the fur trade. On his way through in 1792 Alexander Mackenzie remarked on the garden at Boyer's Post. Since then farming has continued. In 1907 the federal government established an **Experimental Farm**. Plant variety testing, soil management & harvesting methods were

OFF THE BEATEN PATH

Across the Peace River, Buttertown has many original buildings still standing. These handcrafted, dovetailed log structures are worth the side trip. With schools, stores, a church, fire hall & even a pool hall, the community was self-contained. A summer ferry or winter ice bridge were used to cross to the Fort – not always reliable in poor weather. This area is a very important part of our history.

studied; research continues today. Stop at the **Fort Vermilion Heritage Centre** and the **Community & Cultural Complex**. Pick up brochures about the unique history and local sights, then explore this fascinating hamlet. The **Community Complex** has a playground, splash park and horseshoe pits to amuse travelers, as well as original historical buildings on-site. Utilize the **boat launch**, or fish off the dock near the **National Historic Cairn**. The community has schools, a hospital, post office, a hotel and restaurants - a modern place with a laid-back lifestyle. Curling, hockey and golf provide recreation or enjoy ATV'ing, hunting, hiking, and canoeing. Learn about the beginnings of our remarkable province in historic Fort Vermilion.



Photo courtesy Glenbow Archives NA-1234-5

Enjoy the view while crossing the **Peace River Bridge**, NW of Fort Vermilion. Riverboats used to travel up and down this river providing transportation for people and supplies. The **S.S. Peace River**, one such riverboat, was built and launched in Fort Vermilion.

Follow Hwy 88 N to Hwy 58 then head W. Situated at the junction of Hwy 58 and the Mackenzie Hwy is **High Level**. Declared a new town July 1, 1965, High Level originally was a stopping place for trappers and First Nations. Proximity to the oil fields made it a key location. Begun as a Cat trail, the completion of the **Mackenzie Highway** in 1948 allowed pioneers easier access.

OFF THE BEATEN PATH

8.5 km south of Hwy 58 East on the Childs Lake Indian Reserve is **Eleske Shrine**. **Eleske** is the Beaver First Nation word for "White Mud Land", descriptive of the white alkali soils. Construction started in 1944. Built in honor of the St. Bernadette Church, it was hoped prayers at the Shrine would stop the tuberculosis epidemic. With only shovels to use, local people built the shrine using stones from the Boyer River bed. By 1945 **Eleske Shrine** was completed. Every July, hundreds make the trip to the shrine.

More made their way in the 1950's establishing fuel, lodging and supply services. The railroad came in 1963, and the opening of three grain elevators (*North America's most northerly*) in 1964 was the spark that ignited High Level's future. In 1964 a sawmill opened, oil was discovered in the west in 1965, and High Level was set for growth.

Swim at the **RE Walter Memorial Aquatic Centre**, enjoy indoor skating and curling rinks at the **Sports Complex** or check out the tennis & basketball courts. Stop by the new baseball diamonds.

OFF THE BEATEN PATH

Zama City celebrated its 50th anniversary of the first producing well in the fall of 2016. Beginning as an isolated oil patch community in 1966, 255 pools were discovered in the area and the oil business has been booming since. In winter this hamlet grows from 250 to upwards of 4,000, which is a direct result of the oil and gas activity in the area. Located 165km NW of High Level, this busy little community is dedicated to the oil and gas industry. The community has lots to offer, a community hall, school, library, outdoor recreational facilities and emergency medical services. Residents of Zama City enjoy living in this remote location and take advantage of a vast wilderness at their doorstep by enjoying a more laid back life. Explore untamed wilderness on snowshoes, snowmobiles or ATVs, whether on ready trails or cut your own. Zama city is proudly in the center of the huge land mass that hosts the protected **Hay-Zama Bison Herd** of Wood Bison. These majestic animals are thriving and can be found all over the area. The area does incorporate multiple Caribou herds which are rarely seen due to their elusiveness and the inability to access the areas that they prefer. The vast rugged beauty of the area & the possibility of seeing bison definitely make for a memorable experience.

Schools, including Northern Lakes College, a hospital, local radio station, gym, skateboard park, library and shopping are all here. Enjoy a smog free town with no rush hour traffic. Whether it's the neon lights on the many hotel/motel signage - offering almost 1,000 rooms - or the aurora borealis that dance across our sky, prepare to be dazzled. You will discover a welcome place and people only too glad to share their stories while helping you create a few of your own.

OFF THE BEATEN PATH

Rainbow Lake is a town where people come for visit and stay a lifetime. Our town celebrated 50 years in July 2016 and our motto was then and still is "Good People-Good Times". We are located in the northwest corner of the province approximately 900 km north of Edmonton. While our town is predominately oil & gas, we have many amenities to make living a pleasure.



Photo courtesy Ross Eagles

Transportation

There are a number of ways to access the Mackenzie Region and our circle drive.

Mackenzie Highway 35, north from Grimshaw (*Mile Zero*) or Peace River, is a beautiful drive in the summer months. Turn right at Highway 697 towards Tompkins Landing to begin the circle drive tour. If you're up for a more adventurous route then you may want to drive up Bi-centennial Highway 88 from Slave Lake and start your tour from one of the oldest communities in Alberta, Fort Vermilion. Whichever route you take, the drive is memorable.

Arriving by air? Fly into High Level's modern airport. Located 12 km north of town, it's only a few minutes drive into High Level. Scheduled airline service is available six days a week, and with Airport Shuttle service available and on-site car rental agencies, you won't be stranded. *For more information or to check flight times and prices see the contact list below.*

Northern Express provides another transportation option, with service seven days a week connecting Edmonton to the south. Let someone else do the driving while you enjoy the scenery. *See below for contact number.*

The Tompkins Landing Ferry Crossing is a must do on this trip. The Ferry runs 24 hours a day, 7 days a week and there is no fee to cross. If traveling in the spring or late fall it's a good idea to call ahead and check the ferry and river status.

TRANSPORTATION CONTACTS

High Level Regional Airport
Ph: 780-926-3659

Central Mountain Air
Ph: 1-888-865-8585
www.flycma.com

Northwestern Air Lease Ltd.
Ph: 1-877-872-2216
www.NWAL.ca

Tompkins Landing Ferry
Ph: 780-926-2241
or 1-800-8283-908

National Car and Truck Rental
Ph: 1-800-223-9335
brandi@nationalhl.ca
(High Level: 780-926-2588)
steve@macintyregroup.net

Budget Rent a Car
Ph: 1-800-268-8900
(High Level: 780-926-3114)

Northern Express - Bus Line
Ph: 780-502-8080 call/text
www.northernexpress.ca

Visa Truck Rentals
Ph: 780-926-5588

CAMPGROUNDS & PICNIC SITES

	Companies Picnic Day Use	Shelter	Firewood	Drinking Water	Shower	Disposal Station	Trails	Lookout	Boat Launch	Swimming	Rygground	Power at Campsite	Fishing
Aspen Ridge Campground	*	*	*	*	*	*	*	*	*	*	*		
Buffalo Tower & Lookout	*		*	*	*	*	*	*		*	*		
Fantasy North RV Park	*	*	*	*	*	*	*	*		*	*		*
Fort Vermilion Bridge Campsite	*	*	*	*	*	*	*	*		*	*		*
SS D.A. Thomas Park	*	*	*	*	*	*	*	*		*	*		*
Hutch Lake Campground	*	*	*	*	*	*	*	*		*	*		*
Machesis Lake Campground & Equestrian Camp	*	*	*	*	*	*	*	*		*	*		*
Tompkins Landing	*	*	*	*	*	*	*	*		*	*		*
Tourangeau Lake	*	*	*	*	*	*	*	*		*	*		*
Pioneer Country Cabins	*	*	*	*	*	*	*	*		*	*		*
La Crete Ferry Campground	*	*	*	*	*	*	*	*		*	*		*
Elmwood RV Park	*	*	*	*	*	*	*	*		*	*		*
Fox Haven Golf & Country Club	*	*	*	*	*	*	*	*		*	*		*
Wadlin Lake Campground	*	*	*	*	*	*	*	*		*	*		*
Watt Mountain Lookout	*	*	*	*	*	*	*	*		*	*		*
Zama Community Park & Campground	*	*	*	*	*	*	*	*		*	*		*
Rainbow Lake Provincial Campground	*	*	*	*	*	*	*	*		*	*		*
Shady Acres Campground	*	*	*	*	*	*	*	*		*	*		*
Lederer Enterprises RV Park	*	*	*	*	*	*	*	*		*	*		*
Mackenzie Crossroads Museum & Visitor Centre	*									*			
Margaret Lake Lodge & Tapawingo Fishing Lodge (Fly-in)										*			

CAMPGROUNDS AND RV PARKS

Aspen Ridge Campground 3 km south of High Level on Hwy 35 Ph: 780-926-4540	Wadlin Lake Campground 70 km southeast of Fort Vermilion on Hwy 88 Phone: 780-927-3718	Fox Haven Golf & Country Club North of High Level on Hwy 35 Ph: 780-927-3718
Fantasy North Golf Club & RV Park 4605 River Rd, Fort Vermilion Ph: 780-927-4884	Zama Community Park & Campground in Zama City Ph: 780-927-3718	Jubilee Park La Crete (day use only) Ph: 780-927-3718
Fort Vermilion Bridge Campsite North end of the Peace River Bridge on Hwy 88 Ph: 780-927-3718	Buffalo Tower (day use only) 35 km southeast of La Crete on Hwy 697 Ph: 780-927-3718	La Crete Ferry Located in the Tompkins Landing Area, south of La Crete, on the east side of the Peace River. Ph: 780-841-2705
Hutch Lake 32 km north of High Level on Hwy 35 Ph: 780-927-3718	SS D.A. Thomas Park (day use only) In Fort Vermilion on Hwy 88 Ph: 780-927-4222	Pioneer Country Cabins & Campground Located 12 min from La Crete, 13km SW of La Crete
Machesis Lake Campground & Equestrian Camp 33 km east of High Level on Hwy 58 then 29 km south on gravel road Ph: 780-927-3718	Tompkins Landing (day use only) 78 km south then east of High Level on Hwys 35 and 697 Ph: 780-927-3718	Rainbow Lake Provincial Campground Located 38 kms southwest of Rainbow Lake Ph: 780-560-0145
Margaret Lake Lodge Fly-in only, 130 km northeast of High Level Ph: 780-926-5725	Watt Mountain (day use only) 32 km north of High Level on Hwy 35 then 11 km west on gravel road Ph: 780-926-3761	Shady Acres Hotel & Campground Located in the town of Rainbow Lake Ph: 780-956-3400
Pitchimi Lake Fly-in only Ph: 780-926-5725	Mackenzie Crossroads Museum & Visitor's Centre (day use only) 96 St. in High Level Ph: 780-926-4811	Lederer Enterprises RV Park Located east of Rainbow Lake Ph: 780-956-3836
Tourangeau Lake (day use only) 2.5 km NW of La Crete on gravel road Ph: 780-927-3718	Elmwood RV Park Located N, on the outskirts of La Crete Ph: 780-841-1130	

COMMUNITY SERVICES

	Food	Grocery store	Com. Store	Pharm.	Medical Services	Museum	Library	Visitor Centre	Golf Course	Campground	Resturant	School	Recreation Facilities	Accommodation	Shopping
High Level	*	*	*	*	*	*	*	*	*	*	*	*	*	*	*
La Crete	*	*	*	*	*	*	*	*	*	*	*	*	*	*	*
Fort Vermilion	*	*	*	*	*	*	*	*	*	*	*	*	*	*	*
Zama City	*	*	*	*	*	*	*	*	*	*	*	*	*	*	*
Rainbow Lake	*	*	*	*	*	*	*	*	*	*	*	*	*	*	*

DISTANCE IN KILOMETRES

	Zama city	Wood Buf. N Park	Watt Mtn. View pt.	Wadlin Lake	Tompkins Landing	Rocky Lane	Rainbow Lake	Machesis Lake**	La Crete*	La Crete	Hutch Lake	High Level	Grande Prairie	Fort Vermilion	Elaske Shrine	Edmonton	Zama City
Edmonton	887	1200	781	895	660	798	875	798	628	857	770	738	285	825	778		
Eleske Shrine	186	502	83	117	118	20	177	20	188	79	72	40	493	47		301	Wood Buf. N park
Fort Vermilion	233	549	130	70	165	27	224	27	61	61	117	87	540		251	62	Watt Mtn. View pt
Grande Prairie	599	915	496	610	375	513	590	513	541	857	485	453		122	557	184	Wadlin Lake
High Level	146	462	42	157	78	60	137	60	148	119	32		143	73	324	135	Tompkins Landing
Hutch Lake	114	430	24	189	110	92	169	92	180	151		83	60	62	313	124	Rocky Lane
La Crete	256	581	162	38	70	179	256	179			118	129	178	108	359	100	Rainbow Lake
La Crete*	294	610	191	38	70	208	285	208		118	37	83	60	62	313	124	Machesis Lake**
Machesis Lake**	206	522	103	97	138	60	197		125	171	125	42	7	115	366	178	La Crete*
Rainbow Lake	159	599	180	294	197	167			36	154	36	119	24	98	349	160	La Crete
Rocky Lane	206	468	103	217	138		91	108	55	101	55	66	115	7	258	69	Hutch Lake
Tompkins Landing	224	546	104	121	235		19	72	89	36	82	36	47	96	26	277	High Level
Wadlin Lake	303	619	200		285	307	355	372	319	365	319	236	379	309	560	371	Grande Prairie
Watt Mtn. View pt	103	419		335	52	71	20	20	16	134	16	99	44	78	469	140	Fort Vermilion
Wood Buf. N Park	442		28	307	24	43	48	113	12	106	12	71	72	50	301	112	Eleske Shrine
Zama City		485	513	178	461	480	533	550	497	543	497	414	557	487	738	549	Edmonton

*via Fort Vermilion
**via Tompkins Landing

HOTEL/MOTEL ACCOMMODATION ON CIRCLE TOUR

High Level	Super 8 Hotel 9502-114 Ave Ph: 1-888-700-2264 or 780-926-2272 www.bestcdn.com	Sweet Dreams Motel 9810-97 St Ph: 780-926-2727
Best Canadian Motor Inn 10109-96 St Ph: 1-888-700-2264 or 780-926-2272 www.bestcdn.com	Country Gardens Bed & Breakfast 5 km southeast of Fort Vermilion on Hwy 88 Ph: 1-877-900-5008 or 780-821-1000 www.bestwesternhighlevel.com	Fort Vermilion
Best Western Plus Mirage Hotel & Resort 9616 Hwy 58 Ph: 1-877-900-5008 or 780-821-1000 www.bestwesternhighlevel.com	Days Inn 10101-96 St Ph: 780-926-5005 www.daysinnhighlevel.com	Country Gardens Bed & Breakfast 5 km southeast of Fort Vermilion on Hwy 88 Ph: 1-877-900-5008 or 780-821-1000 www.bestwesternhighlevel.com
Elmwood RV Park Ph: 780-926-5005 www.daysinnhighlevel.com	Econo Lodge Inn & Suites 9722-97 St Ph: 780-841-0234 www.econolodgehighlevel.com	Sheridan Lawrence Inn 4801 River Rd Ph: 780-927-4400 www.sheridanlawrenceinn.com
Fox Haven Golf & Country Club	Executive House Suites Hotel & Conference Centre 9815-101 St Ph: 1-877-926-3311 or 780-926-3311 www.executivehousesuites.com	La Crete
Wadlin Lake Campground	Family Motel 10014-97 St Ph: 780-926-3771	Blue Hills Motel 48 km south of La Crete on Hwy 697 Ph: 780-928-3381 www.bluehillsmotel.com
Watt Mountain Lookout	Flamingo Inn 9802-97 St Ph: 877-777-7610 or 780-926-8844	Cabin in the Woods B&B Ph: 780-285-1034 www.cabininthewoodsbandb.com
Zama Community Park & Campground	Four Winds Hotel 10302-97 St Ph: 1-888-449-4637 or 780-926-3736	Carecajou Cabins 30 km upstream from La Crete Ferry (only accessible by boat) Ph: 780-841-1995
Rainbow Lake Provincial Campground	Our Place Motel 10402-97 St Ph: 780-926-2556	Cozy Corner Guest Home 10626 103 Ave Ph: 780-926-5899 or 780-841-1995
Shady Acres Campground	Quality Inn & Suites 9704-97 St Ph: 780-926-4223 www.qualityinnhighlevel.com	La Crete Inn & Suites Ph: 1-800-704-8792 www.lacreteinnandsuites.ca
Lederer Enterprises RV Park	FOOD SERVICES ON CIRCLE TOUR	

High Level
A&W Restaurant
10110-97 St
Ph: 780-926-3151
Boston Pizza
9506-114 Ave
Ph: 780-841-3443
Canton Chinese and Family Restaurant
9908-100 Ave
Ph: 780-926-3053
Family Chinese and Family Restaurant
10014-97 St
Ph: 780-926-3111
Flamingo Inn
9802-97 St
Ph: 780-926-8844
Matt's Pizza 2014
10009-100 Ave
Ph: 780-926-2220
Quiznos Subs
9808 Rainbow Blvd
Ph: 780-926-8861

Fort Vermilion
Stardust Restaurant & Lounge
9704-97 St
Ph: 780-926-4222
Subway
11002 Rainbow Blvd
Ph: 780-926-7827
Tim Hortons
2 Gateway Blvd
Ph: 780-821-4121
Traditions Garden Cafe & Gift Gallery
9810-100 Ave (Main Street)
Ph: 780-926-3100
Winks
10202-97 St
Ph: 780-926-3800

La Crete
Country Grill Steak & Ribs
Main St
Ph: 780-928-4499
Homestyle Bakery & Lunch Counter
10017-100 Ave
Ph: 780-928-3550
Maria's Diner
10102-99 St
Ph: 780-928-2028
Pizza Place
10001-100 Ave
Ph: 780-928-4440

High Level
Stardust Restaurant & Lounge
9704-97 St
Ph: 780-926-4222
Subway
11002 Rainbow Blvd
Ph: 780-926-7827
Tim Hortons
2 Gateway Blvd
Ph: 780-821-4121
Traditions Garden Cafe & Gift Gallery
9810-100 Ave (Main Street)
Ph: 780-926-3100
Winks
10202-97 St
Ph: 780-926-3800

La Crete
Country Grill Steak & Ribs
Main St
Ph: 780-928-4499
Homestyle Bakery & Lunch Counter
10017-100 Ave
Ph: 780-928-3550
Maria's Diner
10102-99 St
Ph: 780-928-2028
Pizza Place
10001-100 Ave
Ph: 780-928-4440

High Level
Stardust Restaurant & Lounge
9704-97 St
Ph: 780-926-4222
Subway
11002 Rainbow Blvd
Ph: 780-926-7827
Tim Hortons
2 Gateway Blvd
Ph: 780-821-4121
Traditions Garden Cafe & Gift Gallery
9810-100 Ave (Main Street)
Ph: 780-926-3100
Winks
10202-97 St
Ph: 780-926-3800

La Crete
Country Grill Steak & Ribs
Main St
Ph: 780-928-4499
Homestyle Bakery & Lunch Counter
10017-100 Ave
Ph: 780-928-3550
Maria's Diner
10102-99 St
Ph: 780-928-2028
Pizza Place
10001-100 Ave
Ph: 780-928-4440

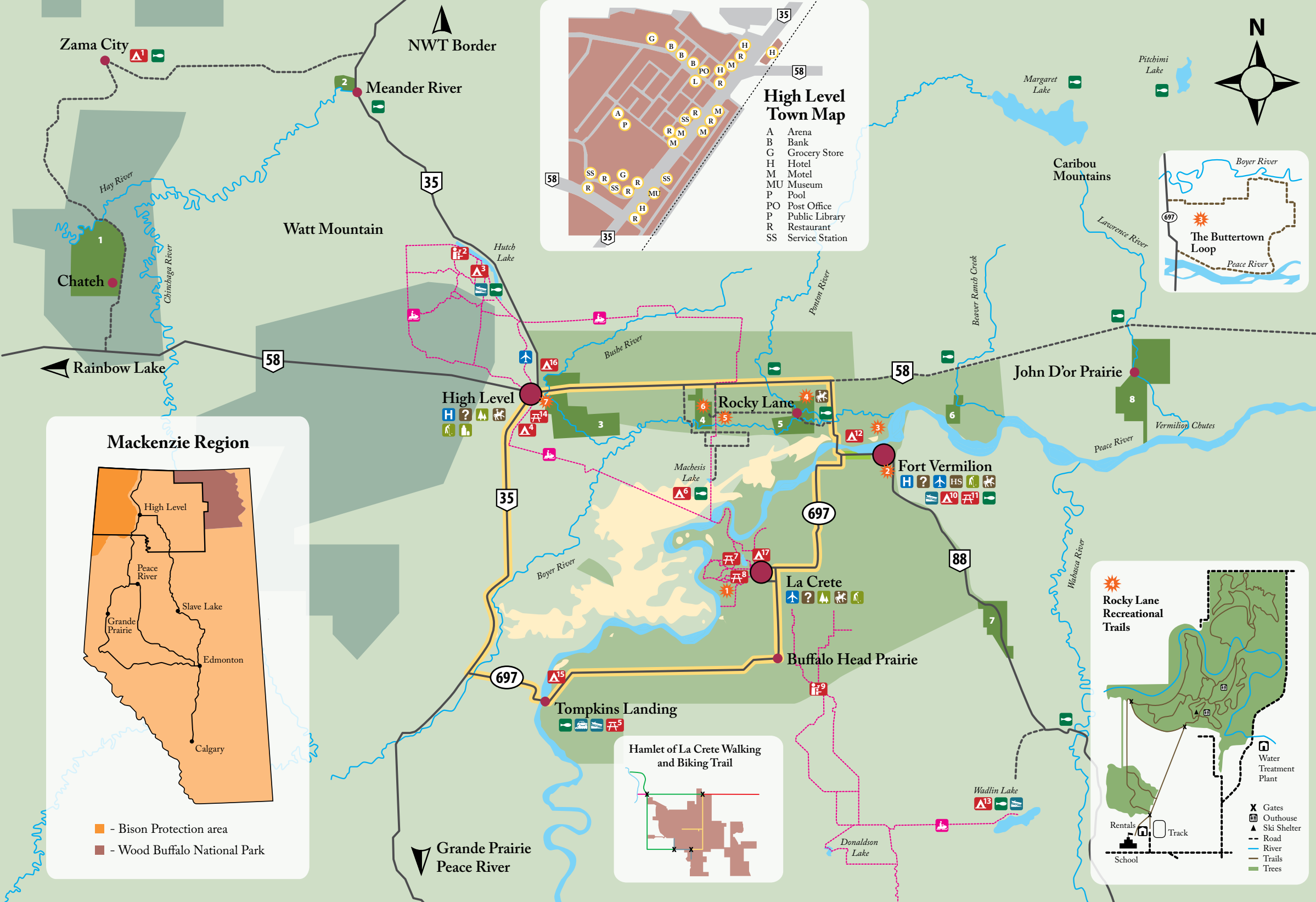
High Level
Stardust Restaurant & Lounge
9704-97 St
Ph: 780-926-4222
Subway
11002 Rainbow Blvd
Ph: 780-926-7827
Tim Hortons
2 Gateway Blvd
Ph: 780-821-4121
Traditions Garden Cafe & Gift Gallery
9810-100 Ave (Main Street)
Ph: 780-926-3100
Winks
10202-97 St
Ph: 780-926-3800

La Crete
Country Grill Steak & Ribs
Main St
Ph: 780-928-4499
Homestyle Bakery & Lunch Counter
10017-100 Ave
Ph: 780-928-3550
Maria's Diner
10102-99 St
Ph: 780-928-2028
Pizza Place
10001-100 Ave
Ph: 780-928-4440

High Level
Stardust Restaurant & Lounge
9704-97 St
Ph: 780-926-4222
Subway
11002 Rainbow Blvd
Ph: 780-926-7827
Tim Hortons
2 Gateway Blvd
Ph: 780-821-4121
Traditions Garden Cafe & Gift Gallery
9810-100 Ave (Main Street)
Ph: 780-926-3100
Winks
10202-97 St
Ph: 780-926-3800

La Crete
Country Grill Steak & Ribs
Main St
Ph: 780-928-4499
Homestyle Bakery & Lunch Counter
10017-100 Ave
Ph: 780-928-3550
Maria's Diner
10102-99 St
Ph: 780-928-2028
Pizza Place
10001-100 Ave
Ph: 780-928-4440

High Level
Stardust Restaurant & Lounge
9704-97 St
Ph: 780-926-4222
Subway
11002 Rainbow Blvd
Ph: 780-926-7827
Tim Hortons
2 Gateway Blvd
Ph: 780-821-4121
Traditions Garden Cafe & Gift Gallery
9810-100 Ave (Main Street)
Ph: 780-926-3100
Winks
10202-97 St
Ph: 780-926-3800



Legend

- Airport
- Boat Launch
- Ferry
- Fishing Spot
- Golf Course
- Museums & Visitors Centre
- Grain Elevator
- Historical Site
- Hospital
- Forestry Operations
- Rodeo Grounds

Campgrounds and Picnic Sites:

- Campground
- Day use
- Lookout

First Nations Reserves:

- 1 - Zama Community Park & Campground
- 2 - Watt Mountain Lookout
- 3 - Hutch Lake Campground
- 4 - Aspen Ridge Campground
- 5 - Tompkins Landing
- 6 - Machesis Lake Campground & Equestrian Camp
- 7 - Tourangeau Lake (Picnic site)
- 8 - Jubilee Park (Picnic site)
- 9 - Buffalo Tower and Lookout (Picnic site)
- 10 - Fantasy North RV Park
- 11 - SS D.A. Thomas Park (Picnic site)
- 12 - Fort Vermilion Bridge Campsite
- 13 - Wadlin Lake Campground
- 14 - MacKenzie Crossroads Museum (Picnic site)
- 15 - La Crete Ferry Campground
- 16 - Fox Haven Golf & Country Club
- 17 - Elmwood RV Park

Points of Interest:

- 1 - La Crete Mennonite Heritage Village
- 2 - Fort Vermilion Heritage Centre
- 3 - Buttertowners Loop
- 4 - Rocky Lane Agricultural Society Trails
- 5 - Eleske Shrine
- 6 - Child Lake Salt Flats
- 7 - Mackenzie Crossroads Museum & Visitors Centre

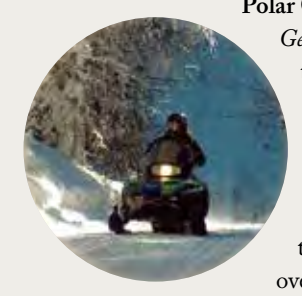
Symbols:
Snowmobile Trails, Hungry Bend Sandhills, Agricultural area, Forested area, Main Loop, Oil and Gas area

WHAT TO See and Do

Trek through wilderness, photograph beautiful vistas, visit fascinating communities, see historic buildings & meet the people who call the North home.

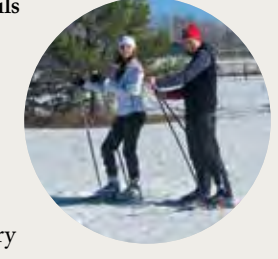
SNOWMOBILE Trails

Explore connecting snowmobile trails operated by Watt Mountain Wanderers (For info call Barry 780-926-1231) and La Crete Polar Cats (Contact Brent 928-7606 or George 780-841-1253). Groomed trails and the possibility of a wildlife encounter make it a worthwhile trip. Numerous ungroomed trails tempt the adventurous. A cabin in the spruce trees is ready to accommodate those braving an overnight excursion, while aurora borealis dance across our wintry night sky.



Hiking AND X-Country Skiing

Rocky Lane Ag Society Recreational Trails & Arena - houses 4-H, equestrian & ski clubs with an indoor riding arena, round pen and outdoor arena. Picnic area is on-site. Ice skating and downhill sledding available throughout the winter. Trails through the Valley allow hiking and horseback riding in summer, x-country skiing in winter. Ski rentals are available. Enjoy beautiful scenery and solitude. Call Terry at the Rocky Lane Ag Society 780-926-1428 for info. For trail info call 780-927-4538.



La Crete Walking Trails - bike, roller blade or stroll along paved trails. A great way to spend a warm evening, with 3.1 km of trails just outside of town and 900 m in town, or 3 km trail on the northwest side of town taking you through a beautiful forest that ends with a spectacular view of Tourangeau Lake.

GOLF Courses

Fox Haven (3 km N of